

Vehicles & Trucks

- 1996 Ford Explorer XLT, 4 WD, 4 L V-6 w/Receiver Hitch
- 1982 Ford Fairmont Furura, No Radiator, Wheels Seized, No Keys At Time of Listing
- 1977 Chevy C30 4Dr Cab, Dually, 4 Speed Transmission, No Radiator or Battery
- 1978 Chevy C60 Truck w/12' Flatbed & Scissor Hoist, No Radiator or Battery

Farm Machinery

- JD 4040 diesel, cab tractor w/JD 148 loader, 359 turbo engine
- JD 3020 diesel tractor w/48 loader, hydraulic
- Farmall H Tractor
- Farmall A tractor, wide front, hydraulic lift, 4 spd., PTO
- Farmall Cub A wide front w/belly mower tractor, burnt
- JD 1518 bat wing, brush cutter w/stump jumper
- Husky 5' 3 pt. IM 500 rotary mower
- JD quick attach top link
- Ford 953 3pt brush hog
- Ford, 7 ft. 3 pt. sickle mower, for parts



- AC belly sickle bar mower
- 6 ft., 3 pt rotary mower, NO PTO shaft
- 5' pull type mower
- Campbell Mfg. PT field sprayer, 28' boom, pump
- 3 pt. PTO seeder
- 3 pt spike bale carrier
- JD single gang disk

Scrap Iron

- Lot scrap iron
- D445 New Holland Skid Loader, Ford 140 CID Engine, 4 Cyl.

Aucitoneer's Note: We will be selling 2 rings both starting at 10 a.m. Selling furniture and household under a tent incase of inclimate wather.

Dieckman Auction Saervice
P.O. Box 99
Cole Camp, MO 65325
www.auctionarrows.com
www.auctionzip.com
auctionzip ID# 17963

*Contains Full Listing Inside
We Will Be Selling With 2 Rings*



Terms: Cash or Check with Proper I.D. Not Responsible For Accidents. Nothing Removed Until Settled For. Statements Made Day of Sale Take Precedence Over Printed Material. Restrooms on Site. Concessions Available.

DIECKMAN AUCTION SERVICE

Col. Doug Dieckman, Auctioneer • 660-668-3882 • 660-287-1962

Guest Auctioneer, Tony Stephens • 573-378-8803

For Photos & Listing www.auctionarrows.com or www.auctionzip.com auctionzip ID# 17963

FARM/REAL ESTATE AUCTION

38261 Maple Grove Rd.



Approximately 4 miles East of Windsor, then 1¼ miles south on Maple Grove to auction site. Watch for sale signs on:

Saturday, April 14, 2018 - 10 a.m.

In order to settle the estate of James W Stuart, we will sell the following:

Selling 322 acres @ 11:00 a.m.



Tract 1: 65 acres +/- farmstead includes 3,152 sq. ft. home, 4-5 bedrooms, 4 bath. Partially finished basement. Well, septic, corrals, 7 out buildings and 61 acres +/- of divided pasture. - \$30,000 Down

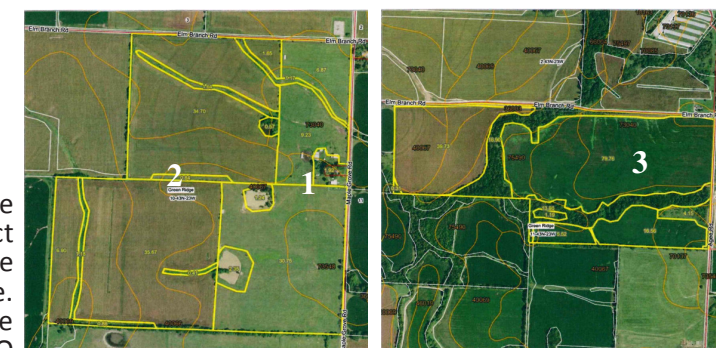
Tract 2: 81 acres +/- fenced cropland - \$30,000 Down Payment

Tract 3: 176 acres +/- cropland - \$50,000 Down Payment

For More Information or Viewing
Real Estate Brokers of Missouri
660-221-4309 • 660-827-0900

All Down Payments Will Be Non-Refundable. Down Payments May Be Cashiers or Personal Checks Made To Landmann Title at Contract Signing, Day Of Auction. Remaining Balances Are Due At Real Estate closing, In Approxiamtely 30 Days. SELLER Will Provide Insured Title. BUYER Is Responsible For Any Lenders Policies. Closing Costs Will Be Split 50/50. Taxes Will Be Pro-Rated. Property Sells As Is With NO Warranties or Implied Warranties. Sale is NOT Contingent Upon Financing. have Your Financing In Order By Sale Day.

STARINNG BID, ON ALL 3 TRACTS IS ONLY \$3250 PER ACRE, WHICH IS BELOW MARKET VALUE!



Tract 1 & Tract 2 Will Be Offered As Individual Tracts.
Tract 1 & Tract 2 Will Then Be Offered As A Single Tract.
Individual Tract Bidders May Bid Jointly, When Tract 1 & 2 Are Offered As SINGLE Tracts.
Tract 3 Will Sell AftEr Tracts 1 & 2 Are SOLD.

James Stuart Trust

Antiques & Collectibles

Sears 4 cycle garden tractor with tow behind seat
 42' 3 legged AERMOTOR windmill, motor, blades & tail. Tail & frame marked Fritz Schroder, Mora, MO
 Antique mole trap & lantern
 Elite oak parlor stove • Wall Clocks
 BF Goodrich bicycle frame, fenders, handlebars, pedals, James Stuart Trust 2 wheels. No rear axle or chain.
 Antique rocker • Old stereos
 Brass bugle • Picnic basket
 2 man crosscut saw
 Perfection kerosene heater
 Wooden school desk
 Brass blow torches
 8 steel implement wheels Hand well pump
 Pony Express spittoon
 Miller High Life deer clock, electric
 1935 Duensenberg Timely Dimensions clock
 Midwest AM cabinet radio
 Converted Oak wall phone radio

Household

50-100 boxes of kitchenware, figurines, decorations, toys, collectibles, pots, pans, stemware, linens, bedding, and much, much more

Appliances

Maytag wringer washer
 Metal tub on stand
 Cl wood burning kitchen stove, like new
 Matching Washer & Dryer
 Refrigerator/Freezer

Patio/Outdoor

Patio table frame James Stuart Trust
 Patio heater & tank
 Patio grills & smokers
 Cl/wood patio bench parts
 Lot lawn & patio furniture, chairs, gliders
 Log holders

Cabinets & Flooring

7 pc. 4 1/4" x 15' appr.
 300 linear ft of 3 1/4" x 3/4" tongue & groove flooring (unfinished oak)
 7 Used Cabines & Island

Furniture

104" semi-circle serving bar
 Matching 7' sofa, 65" love seat
 24" IS, 42" O/S chair
 2 wing back upholstered chairs
 8' x 11' room rug
 Matching large table & coffee table, 24x56, oak
 Matching 55" love seat, 76" sofa
 Lot lamps
 Secretary desk
 2 matching wood/leather rockers
 2 pc office desk/storage cabinet, metal
 5 pc matching bedroom suite, 5 drawer, vanity, chest, bed, night stand
 3 pc matching bedroom suite, wardrobe, bed, vanity
 6 drawer chest of drawers
 Match table, approx. 5 chairs, hutch, buffet
 Library table
 Lot old stereos and speakers
 Wood frame upholstered chair & sofa
 Day bed
 Several new room rugs

Sporting Goods

Coleman camping stove & equipment
 Sears 2200 watt generator
 New bamboo fishing poles
 Tackle box
 Igloo chest cooler
 Wicker dog beds
 Several wildlife mounts
 Lot hunting clothes
 2 turkey mounts

Lawn & Garden

PT lawn spreader
 Weedeater gas blower/vac
 Craftsman straight shaft trimmer
 Garden netting
 Garden Buddy, plug cutting
 25 gal ATV spray tank, pump, wand
 21" Murray push mower w/bagger, 3.5 hp
 24" front tine tiller, B/S, 8 hp
 20" Troy Bilt garden tiller, w/EY20 engine
 Lawn spreader
 4' PTO mower
 Craftsman 5 hp, 24" snow blower, self-propelled on tracks

Snapper 8 hp riding mower, 28"
 LG & Farmall rear wts.
 Craftsman V twin B/S garden tractor
 Metal arches
 Wooden plow mailbox stand
 Case Ingersoll 444 14hp garden tractor w/46" mower deck
 Cub Cadet 1864 Hydra w/mower deck

Tools

Shovels, rakes, forks
 Air tank
 BD sander, mouse sander, 3/8 drill, bit set
 Tool set
 Craftsman 10" miter saw
 Plastic totes
 Rope, come along
 Paint roller & supplies
 Craftsmen 2 gal wet/dry vac, compound
 HD log chain & boomer
 Electric cords
 7 1/2" Skil circular saw
 Craftsman 3/8 cordless drill w/charger & battery
 Lot Wagner paint equipment
 Extension cords
 Wrenches, screwdrivers, pliers
 Handsaw
 Extra handles
 Craftsman nut splitter
 Fire extinguisher
 60 draw organizer
 Sears 30-260 welder
 Squirrel cage fan
 Shop wood stove
 Fence charger
 Fence stretcher
 Jack stands
 Old car parts
 Car ramps
 Auto supplies
 200 Watt power inverter, power supply/air compressor
 Set of 4: P225/70/R15 MS, 5 hole aluminum wheels, like new
 Receiver hitch
 Hub caps



Livestock & Farm Related

4' x 2' x 2' double compartment fuel tank w/hand pump
 260 gal. vertical propane tank
 500 gal. horizontal propane tank
 5" x 14' grain auger w/pulley, no motor
 Fuel tank & electric pump, 36" x 31 x 21", hose & nozzle
 12 metal farrowing crates, sold in multiples of 2
 2 ton portable cattle feeder
 Single trees, collars, brass knob hanes, harness
 2-15" and 2-16" western saddles
 1-16" English saddle, bridles, halters
 Chicken waterer, dog feeder
 Metal driving cart, some damage
 Poly trough liner
 Weathervane mineral feeder frame
 Fiberglass & metal stock tanks & hog tank
 2 ton portable cattle feeder w/creep pen

Building Materials

PVC SDR pipe & fittings, various sizes 1/2" - 6"
 Several windows
 Like New 48" x 80" metal door/frame w/ partial glass
 Several vinyl windows
 Solid oak parquet flooring
 80,000 BTU propane heater
 Several LP fireplaces
 2 new vent-free gas space heaters
 Lot electric light fixtures
 Welded & woven wire
 Aluminum window & vinyl & wooden windows out of building
 100+ 2x6x10' treated
 5 pc 1/2 blue board foam insulation
 2- 8' porch railings
 85-8x8x16 Hadite blocks
 50-4x8x16 concrete blocks
 7 cabinets, some upper, plus an island

Windmill

42' 3 legged AERMOTOR windmill, motor, blades & tail. Tail & frame marked Fritz Schroder, Mora, MO



Notes: Lots of Vehicles & Trailers Have Titles

- 87 GMC K10 Sierra Classic Suburban, 4 WD, 4 Door Body w/Chassis, Front & Rear Axles, 6 Hole 15" Alum. Wheels. Chrome Running Boards, Front & Rear Chrome Bumpers, Chrome Grill & 2 Chrome Mirror Housings. All Side & Back Glass, Cracked Windshield & 9500 lb. Hitch.
- 84 Chevy C10 Silverado 4 DR Suburban, Partial Body & Chassis, 4 WD, 6 Hole 15" Wheels, Front & Rear Axles, 3 Doors, 2 Chrome Bumpers & Hitch. 2 Back Doors w/Glass & Some Others
- Chevy Scottsdale Suburban, 4 Dr, Body & Chassis, 5 Hole 15" Wheels, Rear Chrome Bumper & Only 3 Doors.
- GMC 15 Sierra Pickup Cab on Front Frame w/A-Frames, 5 Hole 15" Wheels, 2 Doors & Painted Front Bumper, V-8 Engine, Auto Transmission, All Glass & Sliding Back Glass
- Modified 1929 Ford Coupe, Street Rod, w/Chevy V-8 Engine, Auto Transmission, Rad., w/4-5 Hole Chrome Wheels & Tires, Chrome Lights & Grill Cowling, Steering Column & Wheel, Rear Split Bumper & Dual Exhaust
- 1936 Chevy, 4 Door w/Rear Quarter Windows, STYLE 36-1019 BODY S16034, Straight 6 Engine, Transmission, Crank Shaft Turns, Supposedly All Parts Were Put In Shed With Chassis
- 1936 Chevy, 4 Door w/Rear Quarter Windows, STYLE 36-1019 BODY K9376, Straight 6 Engine, Transmission, Radiator, Carb., Starter, Drive Train, Body & Chassis w/Front & Rear Axles, 6 Hole Wheels, Hub Caps, Driveshaft, 4 DR, Trunk Lid, 2 Pc. Windshield Glass, Engine Hood, Grill, 2 Bumpers & Brackets
- 1936 Chevy 2 Door, STYLE 36-1211 BODY S12730Z, Engine, Transmission, Radiator, Drive Train, Engine Hood, Split Windshield, 4 6 Hole Wheels, 2 Doors, No Glass
- Chopped 1936 Chevy, Changed Out V-8 Engine, Auto Transmission, Radiator, w/Engine Hood, Front & Rear Axles

RV, Boat & Motorcycle

- 1974 Airstream 30' Travel Trailer
- 1985 Aluma-Lite XL 30' Travel Trailer
- 1977 GMC Van Dura 35 Motohome Chassis, Engine, Transmission, 2 Rear View Mirrors & Glass. Camper Has Been Removed
- 1979 Winnebago Chieftan 30' Motorhome. Chrysler Engine, Auto, Equipment Manuals, Onan Generator, & Duals
- Newman Ind. 20' Open Bow Boat w/228 HP Mercruiser Inboard Motor & 1978 Art Roll Manf. 21' Tandem Axle Boat Trailer & 2 Props (Parts of Lower Unit)
- Minn Kota 36" trolling motor
- 13' V nose flat bottom aluminum boat
- 38" x 16' aluminum canoe
- 1974 Yamaha 250 Motorcycle



Trailers

- 1982 6 1/2 x 16' Homemade Tandem Axle, Flatbed Trailer w/Side Rails & Spare
- 1993 Homemade Axle Stock Trailer
- 8x18' Triple Axle Trailer w/2 1/2' Dovetail, 4' Ramps, Bulldog Hitch (Wood Floor Needs Replaced)
- 2000 American Trailer 6x10' w/Sides & Ramp Tailgate
- 1999 Neal 5x8' Utility Bed Trailer w/2' Metal Sides, 5 Hole 14" White Spoke Wheels, Spare & Ramp Tailgate (Twisted Bed)
- 1989 Mazda Pick-Up Bed Trailer, 5x6' Bed
- 5x6' Homemade Chevy Trailer w/Spare
- Makido Trailer w/6 Hole 14" w/Spare & Painted Bumper